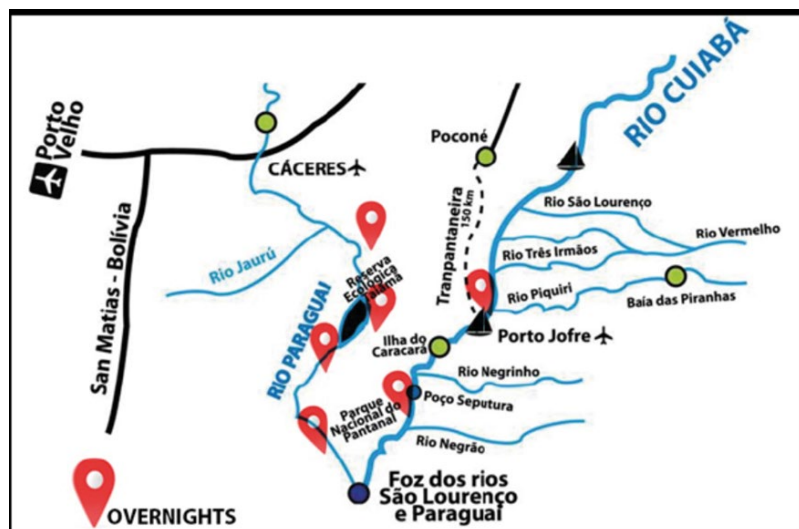


BRAZIL'S PANTANAL Jaguar Safari Cruise



Stretching across Brazil, Bolivia and Paraguay, the Pantanal is the world's largest freshwater wetland, 10 times the size of the Everglades.

Cruise along the Paraguay and Cuiaba rivers, in a lovely, safe and comfortable Motor Vessel with only 5 cabins, exploring 4 different Nature Reserve as: The Taiaman Ecological Reserve, the Pantanal National Park, the Meeting of the Waters State Park and the Transpantaneira Park Road in search of its fascinating and rich wild life as the elusive 'panthera onca' or jaguar, the playful giant river otters, the numerous caimans sunning along the sand bars, the enchanted 'Victoria Regia' giant water lilies as well as the thousands of diverse birds that compose the wildest South American Sanctuary.



DATES –

*2020 – August 22, 28
September 12*

DURATION – 8 Days/ 7 Nights

DEPART/ RETURN – Cuiaba, Brazil

SHIP – M/V MINAS

From - \$4,545 (Double)

THE PANTANAL WETLAND

This area is an unparalleled wildlife sanctuary of spectacular beauty, an ecological paradise containing hundreds of species of birds, thousands of varieties of butterflies, myriads of brightly colored flowers, and shoals of fish. Capuchin and Howler monkeys, capybaras, toucans, anacondas, caimans and tapirs help create an aquatic and sylvan theater of sights and sounds. The endangered jaguar, and increasingly rare Hyacinthine macaws and giant river otters, all make their home in the Pantanal. And yet, despite the region's beauty and remarkable environmental and economic value, the Pantanal remains little known.

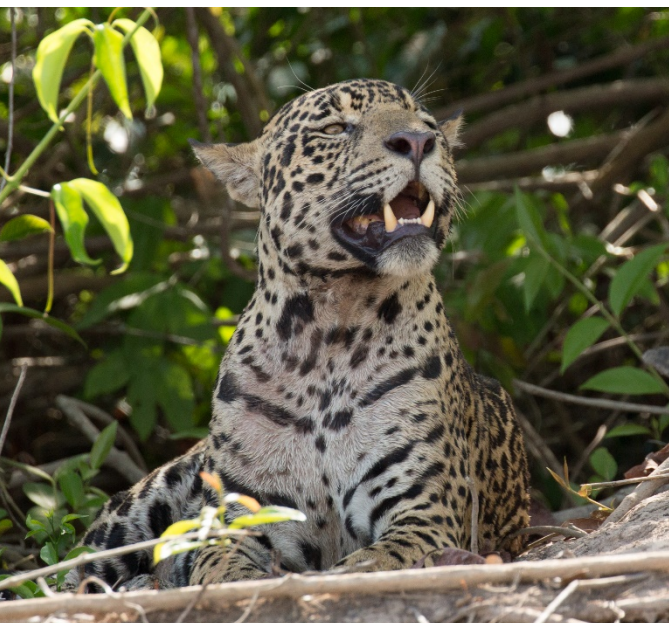
ITINERARY (As below or Reverse)

DAY 1 - ARRIVE CUIABA – Transfer to Deluxe Hotel

Meet at Cuiaba airport, transfer to your hotel and overnight.

Day 2 - TRANSFER TO CACERES - board M/V MINAS

Depart towards the town of Caceres for approximately 205 km on the paved BR 364 federal highway. Lunch enroute. Before reaching Caceres, we access an unpaved road and drive for approximately 75km through a beautiful valley, formed at the same period as the Andean elevation occurred, some 400 million years ago. We'll board MINAS motor vessel by the end of the day, for dinner and rest. (LD)



DAY 3 - TAIAMAN ECOLOGICAL RESERVE - Search for Jaguars

During the cruise there will be several outings or river safaris, done in a very comfortable and safe speed boat, exploring side lakes, river channels and lagoons searching for jaguars and other wildlife roaming along the river banks and sand dunes. After an early breakfast, board your river safari boat to explore this region.

Return on board for lunch, while the Motor Vessel start its cruise forward downriver to the **Taiaman Ecological Reserve**. Board the speed boat and explore its waterways and flooded grass land. Dinner and overnight. (BLD)



DAY 4 - PARAGUAY RIVER - Search for Jaguars

Taiaman Ecological Reserve is a 70km long island, in speed boat we will explore the right side known as 'Braçinho' while the motor vessel cruise on the Paraguay river channel, meeting the group for lunch around the 'Formoso' Bay. Afternoon further river safari, while the vessel keeps cruising down river up to a region known as Concepcion Port. (Up to the 70's the cattle, bred on the fields between Pocone and the

Paraguay river, used to be embarked in this Port and taken downriver up to Corumba in order to be transported by train to Sao Paulo city). (BLD)



Day 5 - AMOLAR MOUNTAIN CHAIN - Search for Jaguars

Morning river safari in the surrounding bay and river channels in search of jaguars and other wildlife. Back to the Motor Vessel we will cross two of the largest bays on the Paraguay River, the 'Uberaba' and 'Gaiva', each more than 30km wide, almost like crossing a sea. We will keep cruising up to the 'Amolar' mountain chain, an exceptionally beautiful landscape. Here the giant Victoria Regia water lilies are only one of the marvelous gifts of nature to be observed. (BLD)



DAY 6 - PANTANAL NATIONAL PARK - Search for Jaguars

Early morning the Vessel will keep cruising up to the 'Gaiva' Hill, where the group will visit an archeological site, then further explore the 'Acorizal' Bay, following our river safari up to the 'Caracara' land mark. Lunch on board, while cruising towards the Pantanal National Park. In our safari boat explore the 'Burro' Bay, the park's main bay, while the Vessel already begins to cruise up the Cuiaba River. Overnight in the proximity of the 'Negrao' River. (BLD)



DAY 7 - MEETING OF THE WATERS' STATE PARK - Search for Jaguars

Morning river safari exploring the 'Negrao' and 'Negrinho' Rivers, while the Vessel keeps cruising up river towards the 'Jofre' Port. Lunch on board. Further river safari exploring the 'Meeting of Waters' State Park and its labyrinth formed by the waters of the Piquiri, Three Brothers and Cuiaba Rivers. Meet the Vessel for dinner and rest. (BLD)



DAY 8 – TRANSPANTANEIRA PARK ROAD SAFARI + Transfer PORTO JOFRE to CUIABA

After early breakfast, disembark for our last safari, this time back to air-conditioned vehicles along the 147km unpaved Transpantaneira Park Road up to the gold mine town of Pocone, then further for 111 km on the paved state road towards Cuiaba airport. Lunch enroute. Check in for your late afternoon flight, for your next destination. (BL)

This 8-day/7-night program, including arrival hotel night in Cuiaba and airport transfers, may be booked alone, or combined with one of two Amazon programs out of Manaus aboard the M/Y Tucano (4 night or 6-night cruise), including requisite air, hotel and transfers.



M/V Minas has only 4 Double/1 single ensuite cabins for a maximum of 9 guests.

2020 RATES 8-DAYS/7-NIGHTS PANTANAL JAGUAR SAFARI August 22, 28 September 12	
Double Cabin	\$ 4,545
Single in Double Cabin	\$ 7,745
Single in Single Bunk Cabin	\$ 5,245

Rates include:

- Arrival transfer from Cuiaba airport to hotel
- One-night Deluxe Cuiaba hotel accommodation
- Transfer in and out from Cuiaba
- All meals as mentioned and 6 nights onboard accommodation
- English speaking naturalist guide
- Daily departures by speed boat to search for wildlife

Not included:

- Drinks; Personal expenses

Add a 4- or 6-night Amazon River expedition cruise before the Pantanal. Includes airfare between Manaus and Cuiaba, and necessary hotels and transfers. Contact us for more Information.



Reservations & Information
1-855-EXPLOR1 (397-5671)
 Email - info@explorcruises.com
www.explorcrises.com

Combination Rates Amazon & Pantanal August 16, 21	14-DAYS w/ 4-NT Amazon Aug 16	15-DAYS w/ 6-NT Amazon Aug 21
Tucano Yellow Cabin	\$ 7,815	\$ 9,795
Tucano Green Cabin	\$ 6,965	\$ 8,265
Tucano Single/Minas Double Cabin	\$ 11,215	\$ 13,105
Tucano Single/Minas Single Cabin	\$ 8,715	\$ 10,605